



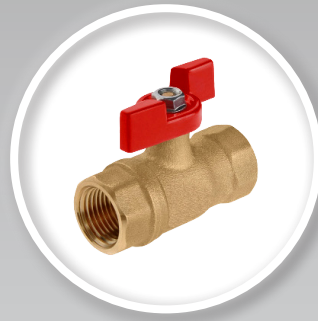
Construction Material  
**Valves & Fittings**  
2020 Catalogue



CE



**Model No: 102 A**



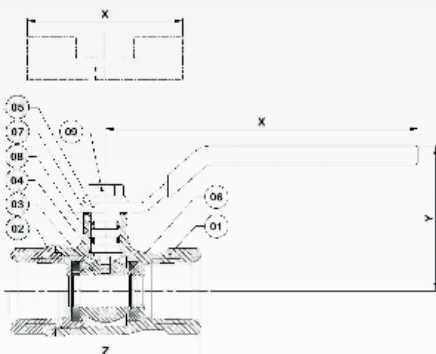
**Model No: 102 C**

Code No.	Size	Z (mm)	Y (mm)	X (mm)	Bore Size (mm)	Weight (mm)	DN	Q. In Box
No. 102 A	NPT ½"	62	47	101	Ø 10	232	15	80 (8 ×10)
	NPT ¾"	71	51	101	Ø 15	338	20	60 (6 ×10)
	NPT 1"	83	55	116	Ø 20	539	25	40 (4 ×10)
No. 102 C	NPT ½"	62	40	50	Ø 10	193	15	80 (8 ×10)
	NPT ¾"	71	45	65	Ø 15	332	20	60 (6 ×10)

Ambient Temperature: (-29°C ... + 66°C)  
MOP= 5 bar , O.G (Non- Shock)

No.	Part Name	Material
01	Body	Brass
02	Body Cap	Brass
03	Ball	Brass (Nickel- Chrome Plated)
04	Stem	Brass
05	Handle	No. A02A: Steel (Zinc Plated)- Cover (PVCE) No 102C (½") : AL. (Painted)
06	Seat	PTFE
07	Washer	PE
08	O _ring	NBR
09	Hex Nut- DIN 6923	Steel (Zinc Plated)

Test Pressure: Shell 29bar (Hydrostatic)  
Seat 7.5bar (Air) 25°C±5





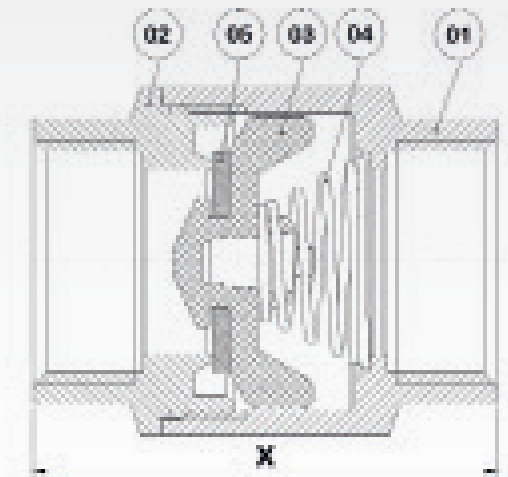
**Model No: 105 A**

Code No.	Size	X (mm)	Weight (gr)	DN	Q. In Box
No. 105 A	G ½"	48	150	15	80 (8 ×10)
	G ¾"	51	200	20	60 (6 ×10)
	G 1"	57	310	25	40 (4 ×10)

Ambient Temperature: (+5°C ... +80°C)  
 PN= 16 bar , W. (Non- Shock)

No.	Part Name	Material
01	Body	Brass
02	Body Cap	Brass
03	Valvate	POM
04	Spring	Stainless Steel
05	Seal	NBR

Test Pressure: Shell 24 bar (Hydrostatic)  
 Seat 17.5bar (Hydrostatic) 25°C±5





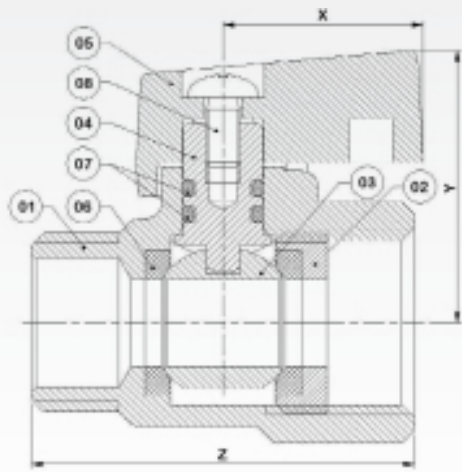
**Model No: 107 A**

Code No.	Size	Z (mm)	Y (mm)	X (mm)	Bore Size (mm)	Weight (mm)	DN	Q. In Box
No. 107	G ½"	44	34	23	Ø 10	93	15 R	100 (10 ×10)
	G ¾"	49	37	23	Ø 15	160	20 R	60 (6 ×10)

Ambient Temperature: (+5°C ... + 80°C)  
 PN= 10 bar , W. (Non- Shock)

No.	Part Name	Material
01	Body	Brass (Nickel Plated)
02	Body Cap	Brass (Nickel Plated)
03	Ball	Brass (Nickel- Chrome Plated)
04	Stem	Brass
05	Handle	AL. (Painted)
06	Seat	PTFE
07	O__ring	NBR
08	Screw- As 1427H	Steel (Zinc Plated)

Test Pressure: Shell 25 bar (Hydrostatic)  
 Seat 16 bar (Hydrostatic) 25°C±5





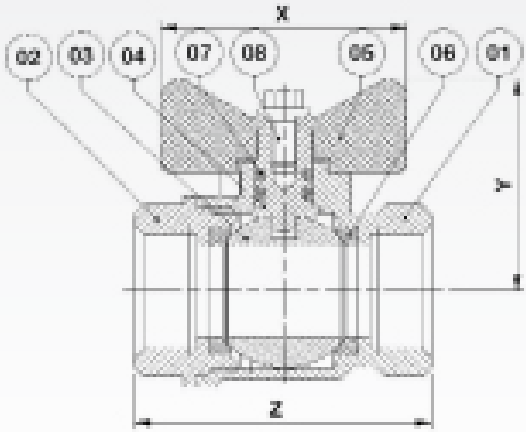
**Model No: 112 A**

Code No.	Size	Z (mm)	Y (mm)	X (mm)	Bore Size (mm)	Weight (gr)	DN	Q. In Box
No. 112A	G ½"	48.5	35	40	Ø 15	139	15	100 (10 ×10)
	G ¾"	54	37	40	Ø 19	229	20 R	60 (6 ×10)
	G 1"	70	49	54	Ø 24	470	25 R	40 (4 ×10)

Ambient Temperature: (+5°C ... +80°C)  
 PN= 10 bar , W. (Non- Shock)

No.	Part Name	Material
01	Body	Brass (Nickel Plated)
02	Body Cap	Brass (Nickel Plated)
03	Ball	Brass (Nickel- Chrome Plated)
04	Stem	Brass
05	Handle	AL. (Painted)
06	Seat	PTFE
07	O _ring	NBR
08	Screw- As 1427H	Steel (Zinc Plated)

Test Pressure: Shell 25 bar (Hydro-  
 static) Seat 16 bar (Hydrostatic)  
 25°C±5





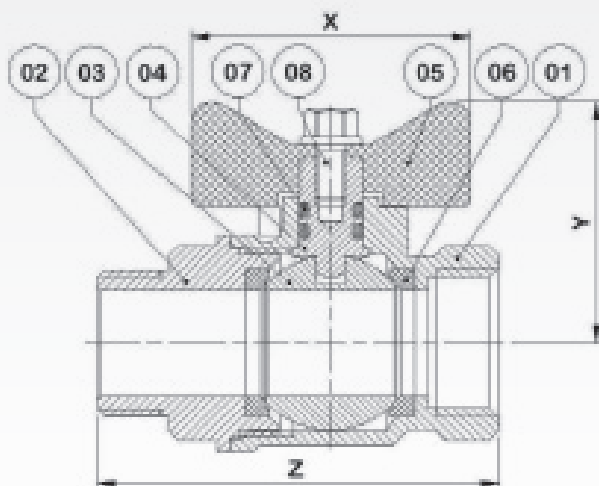
**Model No: 113 A**

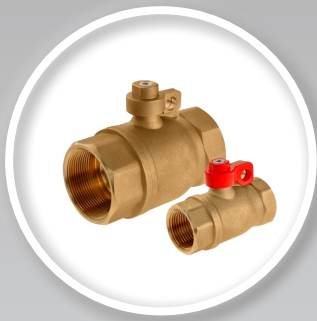
Code No.	Size	Z (mm)	Y (mm)	X (mm)	Bore Size (mm)	Weight (gr)	DN	Q. In Box
No. 113 A	G ½"	57.5	35	40	Ø 15	172	15	100 (10 ×10)
	G ¾"	65	37	40	Ø 19	282	20 R	60 (6 ×10)
	G 1"	79	49	54	Ø 24	545	25 R	40 (4 ×10)

Ambient Temperature: (+5°C ... +80°C)  
 PN= 10 bar , W. (Non- Shock)

No.	Part Name	Material
01	Body	Brass (Nickel Plated)
02	Body Cap	Brass (Nickel Plated)
03	Ball	Brass (Nickel- Chrome Plated)
04	Stem	Brass
05	Handle	AL. (Painted)
06	Seat	PTFE
07	O _ring	NBR
08	Hex Flange Screw	Steel (Zinc Plated)

Test Pressure: Shell 25 bar (Hydrostatic)  
 Seat 16 bar (Hydrostatic) 25°C±5





### Model No: 114 A

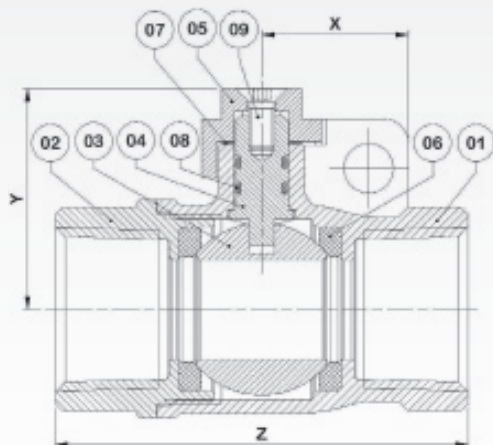
Model No: 114 (1½ & 2")  
Model No: 114 (1" & 1¼")

Code No.	Size	Z (mm)	Y (mm)	X (mm)	Bore Size (mm)	Weight (gr)	DN	Q. In Box
No. 114A	NPT 1"	83	44.5	30	Ø 20	570	25	40 (4 × 10)
	NPT 1¼"	96.5	48	30	Ø 25	950	32	20 (10 × 2)
	NPT 1½"	108.5	65	35	Ø 32	1450	40	16 (8 × 2)
	NPT 2"	127	65	35	Ø 40	2200	50	8 (4 × 2)

Ambient Temperature: (-29°C ... +66°C)  
MOP= 5 bar , O.G (Non- Shock)

No.	Part Name	Material
01	Body	Brass
02	Body Cap	Brass
03	Ball	Brass (Nickel- Chrome Plated)
04	Stem	Brass
05	Handle	(1" & 1¼"): Zamac (Red Painted) (1½" & 2"): Brass
06	Seat	PTFE
07	Washer	RE
08	O _ring	NBR
09	Screw _ DIN7991	Stainless Steel

Test Pressure: Shell 29 bar (Hydrostatic)  
Seat 7.5 bar (Air) 25°C±5





**Model No: 115 -1 A**



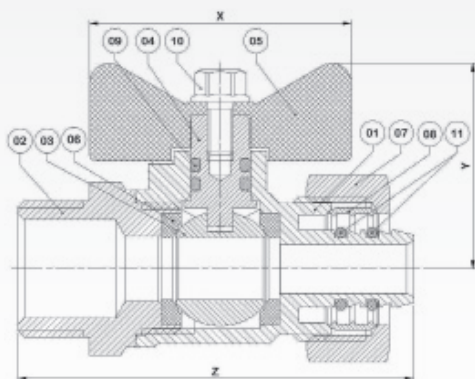
**Model No: 115 -2 A**

Code No.	Size	Z (mm)	Y (mm)	X (mm)	Bore Size (mm)	Weight (gr)	DN	Q. In Box
No. 115 A	G 1/2" × Pipe Ø 16	60	31	40	Ø 10	144	15 R	100 (10×10)
	G 1/2" × Pipe Ø 20	60	33	40	Ø 10	160	15 R	100 (10×10)
	G 3/4" × Pipe Ø 20	67	35	40	Ø 15	220	20 R	60 (6×10)
	G 3/4" × Pipe Ø 25	67	37	40	Ø 15	260	20 R	60 (6×10)

Ambient Temperature: (+5°C ... +80°C)  
PN= 10 bar , W. (Non- Shock)

No.	Part Name	Material
01	Body	Brass (Nickel Plated)
02	Body Cap	Brass (Nickel Plated)
03	Ball	Brass (Nickel- Chrome Plated)
04	Stem	Brass
05	Handle	AL. (Painted)
06	Seat	PTFE
07	Hex- Nut	Brass (Nickel Plated)
08	Ring	Brass (Nickel Plated)
09	O __ring	NBR
10	Hex Flange Screw	Steel (Zinc Plated)
11	O __ring	EPDM

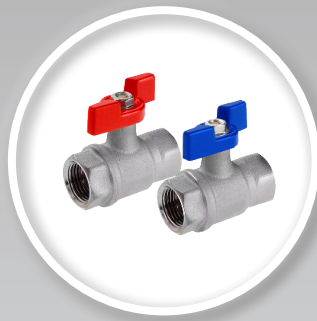
Test Pressure: Shell 25 bar (Hydrostatic)  
Seat 16 bar (Hydrostatic) 25°C±5







**Model No: 116 A**



**Model No: 116 B**



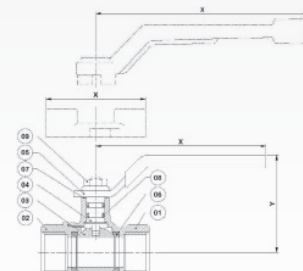
**Model No: 116 D**

Code No.	Size	Z (mm)	Y (mm)	X (mm)	Bore Size (mm)	Weight (gr)	DN	Q. In Box
No. 116 A	G 1/2"	54	49	85	Ø 15	200	15	80 (8 × 10)
	G 3/4"	60	51	85	Ø 19	276	20 R	60 (6 × 10)
	G 1"	76	57	116	Ø 24	560	25 R	40 (4 × 10)
	G 1 1/4"	85	62	116	Ø 30	773	32 R	20 (10 × 2)
	G 1 1/2"	98	75	152	Ø 38	1360	40 R	16 (8 × 2)
No. 116 B	G 1/2"	54	42	50	Ø 15	172	15	80 (8 × 10)
	G 3/4"	60	44	50	Ø 19	228	20 R	60 (6 × 10)
No. 116 D	G 2 1/2"	139	105	233	Ø 50	3500	65 R	2 (2 × 1)
	G 3"	163	128	233	Ø 65	6160	80 R	2 (2 × 1)

Ambient Temperature: (+5°C ... +80°C)  
PN= 10 bar , W.G (Non- Shock)

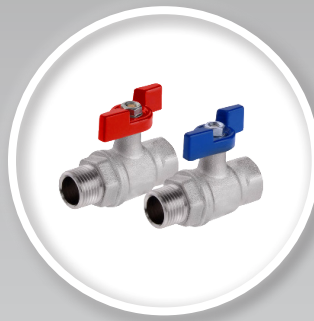
No.	Part Name	Material
01	Body	Brass (Nickel Plated)
02	Body Cap	Brass (Nickel Plated)
03	Ball	Brass (Nickel- Chrome Plated)
04	Stem	Brass
05	Handle	Model No. 116 A: Steel (Zinc Plated)- Cover (PVCE) Model No. 116 B & 116 D: AL. (Painted)
06	Seat	PTFE
07	Washer	PE
08	O _ring	NBR
09	Hex Nut _ DIN 6923	Steel (Zinc Plated)

Test Pressure: Shell 25 bar (Hydrostatic)  
Seat 16 bar (Hydrostatic) 25°C±5





**Model No: 117 A**



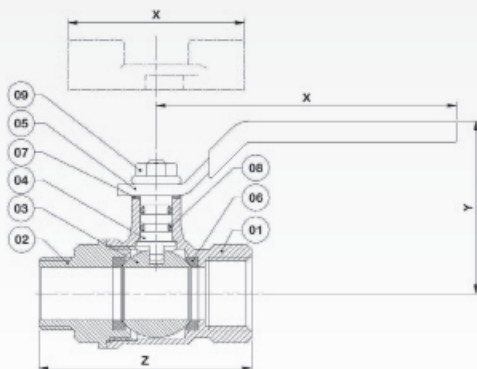
**Model No: 117 B**

Code No.	Size	Z (mm)	Y (mm)	X (mm)	Bore Size (mm)	Weight (gr)	DN	Q. In Box
No. 117 A	G ½"	60	49	85	Ø 15	220	15	80 (8 ×10)
	G ¾"	68	51	85	Ø 19	330	20 R	60 (6 ×10)
	G 1"	82	57	116	Ø 24	602	25 R	40 (4 ×10)
No. 117 B	G ½"	60	42	50	Ø 15	192	15	80 (8 ×10)
	G ¾"	68	44	50	Ø 19	302	20 R	60 (6 ×10)

Ambient Temperature: (+5°C ... +80°C)  
 PN= 10 bar , W. (Non- Shock)

No.	Part Name	Material
01	Body	Brass (Nickel Plated)
02	Body Cap	Brass (Nickel Plated)
03	Ball	Brass (Nickel- Chrome Plated)
04	Stem	Brass
05	Handle	Model No. 117 A: Steel (Zinc Plated)- Cover (PVCE) Model No. 117 B : AL. (Painted)
06	Seat	PTFE
07	Washer	PE
08	O __ring	NBR
09	Hex Nut _ DIN 6923	Steel (Zinc Plated)

Test Pressure: Shell 25 bar (Hydrostatic)  
 Seat 16 bar (Hydrostatic) 25°C±5





**Model No: 118 A**



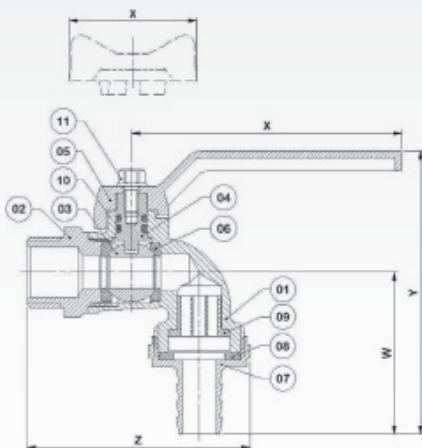
**Model No: 118 C**

Code No.	Size	W (mm)	Z (mm)	Y (mm)	X (mm)	Bore Size (mm)	Weight (gr)	DN	Q. In Box
No. 118 A	G ½"	47	66	36	80	Ø 10	169	15 R	90 (9 ×10)
No. 118 C	G ½"	47	66	26	40	Ø 10	157	15 R	90 (9 ×10)

Ambient Temperature: (+5°C ... +80°C)  
 PN= 10 bar , W. (Non- Shock)

No.	Part Name	Material
01	Body	Brass (Nickel Plated)
02	Body Cap	Brass (Nickel Plated)
03	Ball	Brass (Nickel- Chrome Plated)
04	Stem	Brass
05	Handle	AL. (Painted)
06	Seat	PTFE
07	Hose Holder	Brass
08	Washer	NBR
09	Spray	PE
10	O _ring	NBR
11	Hex Flange Screw	Steel (Zinc Plated)

Test Pressure: Shell 25 bar (Hydrostatic)  
 Seat 16 bar (Hydrostatic) 25°C±5

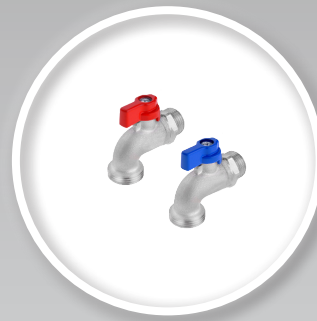




**Model No: 119 A**



**Model No: 119 C**



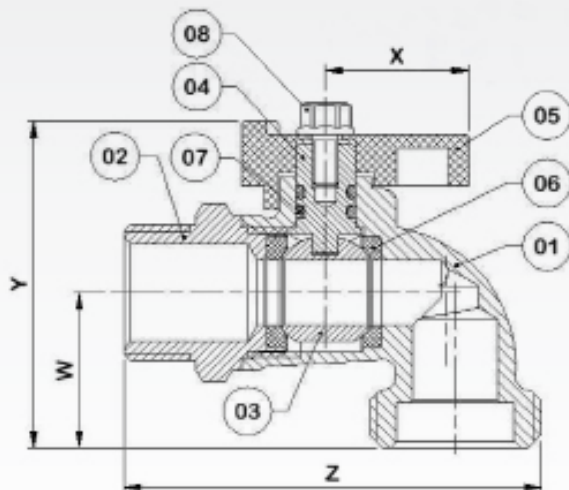
**Model No: 119 D**

Code No.	Size	W (mm)	Z (mm)	Y (mm)	X (mm)	Bore Size (mm)	Weight (gr)	DN	Q. In Box
No. 119 A	G ½"	24	64	26	22	Ø 10	140	15 R	100 (10 ×10)
No. 119 B	G ½"	24	64	26	42	Ø 10	142	15 R	100 (10 ×10)
No. 119 C	G ½"	24	64	26	40	Ø 10	142	15 R	100 (10 ×10)

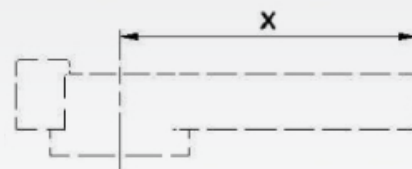
Ambient Temperature: (+5°C ... +80°C)  
 PN= 10 bar , W. (Non- Shock)

No.	Part Name	Material
01	Body	Brass (Nickel Plated)
02	Body Cap	Brass (Nickel Plated)
03	Ball	Brass (Nickel- Chrome Plated)
04	Stem	Brass
05	Handle	Model No. 119 A & B: POM Model No. 119 C : AL. (Painted)
06	Seat	PTFE
07	O _ring	NBR
08	Hex Flange Screw	Steel (Zinc Plated)

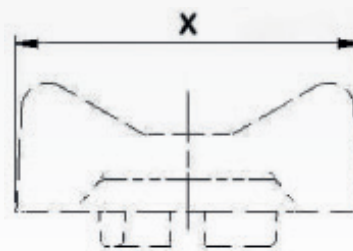
Test Pressure: Shell 25 bar (Hydrostatic)  
 Seat 16 bar (Hydrostatic) 25°C±5



**Model No: 119 A**



**Model No: 119 B**



**Model No: 119 C**



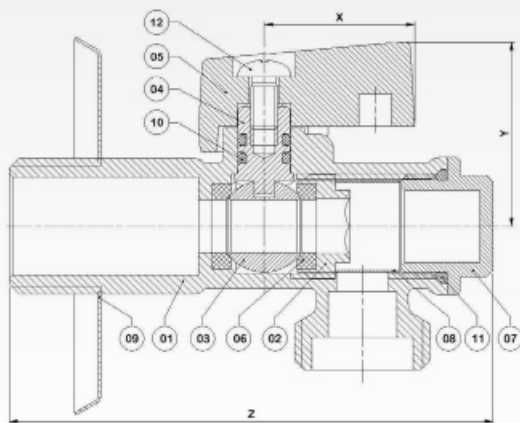
**Model No: 123 A**

Code No.	Size	Z (mm)	Y (mm)	X (mm)	Bore Size (mm)	Weight (gr)	DN	Q. In Box
No. 123 A	G 1/2" × G 1/2"	74	28	23	Ø 8	126	10 R	100 (50 × 2)
	G 1/2" × G 3/8"	74	28	23	Ø 8	120	10 R	100 (50 × 2)

Ambient Temperature: (+5°C ... + 80°C)  
 PN= 10 bar , W. (Non- Shock)

No.	Part Name	Material
01	Body	Brass
02	Body Cap	Brass
03	Ball	Brass (Nickel- Chrome Plated)
04	Stem	Brass
05	Handle	AL. (Painted)
06	Seat	PTFE
07	Plug	Brass
08	Filter	Stainless Steel
09	Plate	Stainless Steel
10	O __ring	NBR
11	O __ring	EPDM
12	Screw __ AS 1427H	Steel (Zinc Plated)

Test Pressure: Shell 25 bar (Hydrostatic)  
 Seat 16 bar (Hydrostatic) 25°C±5





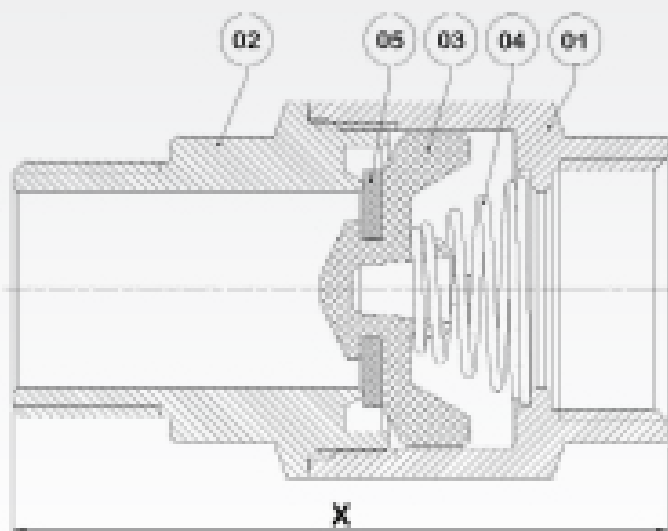
**Model No: 124 A**

Code No.	Size	X (mm)	Weight (gr)	DN	Q. In Box
No. 124 A	G ¾"	67	245	20	64 (8 × 8)

Ambient Temperature: (+5°C ... + 80°C)  
 PN= 16 bar , W. (Non- Shock)

No.	Part Name	Material
01	Body	Brass
02	Body Cap	Brass
03	Valvate	POM
04	Spring	Stainless Steel
05	Seal	NBR

Test Pressure: Shell 24 bar (Hydrostatic)  
 Seat 17.5 bar (Hydrostatic) 25°C±5





**Model No: 125 A**



**Model No: 125 C**



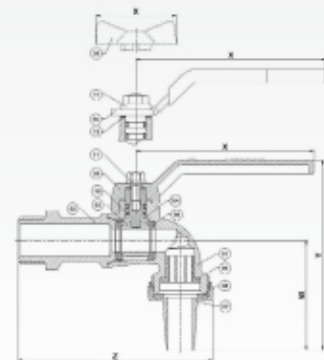
**Model No: 125 D**

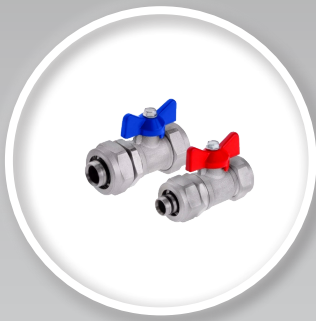
Code No.	Size	W (mm)	Z (mm)	Y (mm)	X (mm)	Bore Size (mm)	Weight (gr)	DN	Q. In Box
No. 125 A	G ½"	47	88	36	80	Ø 10	219	15 R	90 (9 ×10)
No. 125 C	G ¾"	54	100	103	85	Ø 15	347	20 R	60 (6 ×10)
No. 125 D	G ½"	47	88	36	54	Ø 10	213	15 R	90 (9 ×10)

Ambient Temperature: (+5°C ... +80°C)  
 PN= 10 bar , W. (Non- Shock)

No.	Part Name	Material
01	Body	Brass (Nickel Plated)
02	Body Cap	Brass (Nickel Plated)
03	Ball	Brass (Nickel- Chrome Plated)
04	Stem	Brass
05	Handle	No. 125 A & D: AL. (Painted) No. 125 C: Steel (Zinc Plated)- Cover (PVCE)
06	Seat	PTFE
07	Hose Holder	Brass
08	Washer	NBR
09	Spray	PE
10	O __ ring	NBR
11	Hex Flange Screw (No. 125 A & D) Hex Nut __ DIN 6923 (No. 125 C)	Steel (Zinc Plated)
12	Washer (Only No. 125 C)	PE

Test Pressure: Shell 25 bar (Hydrostatic)  
 Seat 16 bar (Hydrostatic) 25°C±5





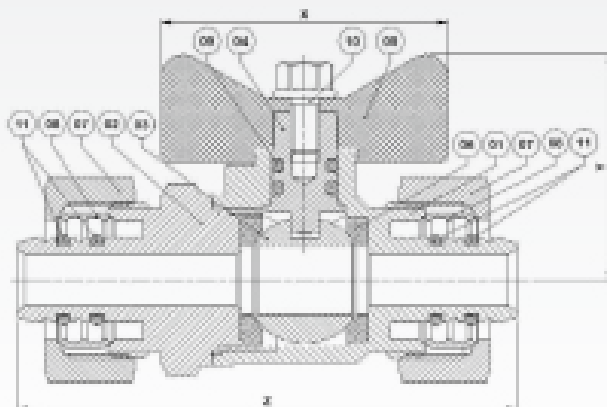
**Model No: 127 A**

Code No.	Size	Z (mm)	Y (mm)	X (mm)	Bore Size (mm)	Weight (gr)	DN	Q. In Box
No. 127 A	Pipe Ø 16× Pipe Ø 16	69	31	40	Ø 10	179	15 R	56 (28×2)
	Pipe Ø 20× Pipe Ø 20	70	33	40	Ø 10	227	15 R	48 (24×2)

Ambient Temperature: (+5°C ... +80°C)  
 PN= 10 bar , W. (Non- Shock)

No.	Part Name	Material
01	Body	Brass (Nickel Plated)
02	Body Cap	Brass (Nickel Plated)
03	Ball	Brass (Nickel- Chrome Plated)
04	Stem	Brass
05	Handle	AL. (Painted)
06	Seat	PTFE
07	Hex __ Nut	Brass (Nickel- Plated)
08	Ring	Brass (Nickel- Plated)
09	O __ ring	NBR
10	Hex Flange Screw	Steel (Zinc Plated)
11	O __ ring	EPDM

Test Pressure: Shell 25 bar (Hydrostatic)  
 Seat 16 bar (Hydrostatic) 25°C±5







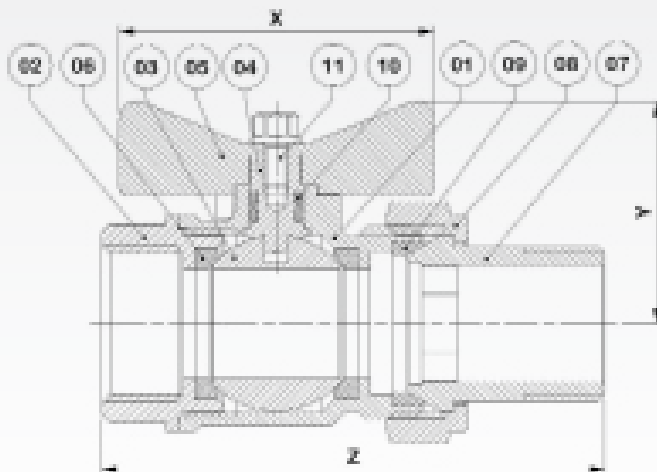
**Model No: 128 A**

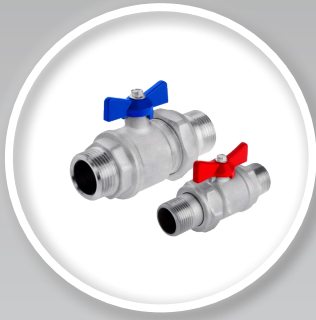
Code No.	Size	Z (mm)	Y (mm)	X (mm)	Bore Size (mm)	Weight (gr)	DN	Q. In Box
No. 128 A	G <sup>3</sup> / <sub>4</sub> "	86	37	54	Ø 19	339	20 R	60 (30 × 2)
	G 1"	100	49	54	Ø 24	631	25 R	40 (20 × 2)

Ambient Temperature: (+5°C ... + 80°C)  
 PN= 10 bar , W. (Non- Shock)

No.	Part Name	Material
01	Body	Brass (Nickel Plated)
02	Body Cap	Brass Nickel Plated)
03	Ball	Brass (Nickel- Chrome Plated)
04	Stem	Brass
05	Handle	Al. (Painted)
06	Ball Seat	PTFE
07	Couple	Brass (Nickel Plated)
08	Nut Couple	Brass Nickel Plated)
09	Couple Seat	PTFE
10	O __ ring	NBR
11	Hex Flange Screw	Steel (Zinc Plated)

Test Pressure: Shell 25 bar (Hydrostatic)  
 Seat 16 bar (Hydrostatic) 25°C±5





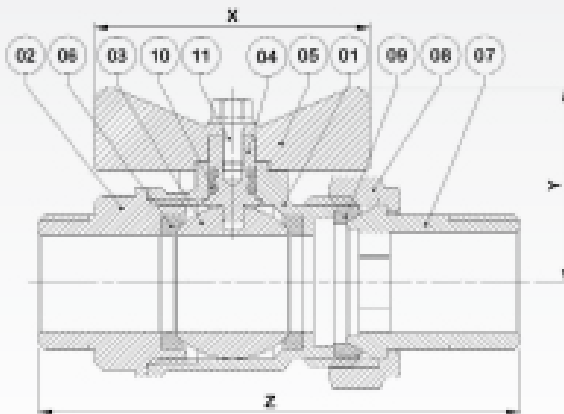
**Model No: 129 A**

Code No.	Size	Z (mm)	Y (mm)	X (mm)	Bore Size (mm)	Weight (gr)	DN	Q. In Box
No. 129 A	G ¾"	94	37	54	Ø 19	369	20 R	60 (30 ×2)
	G 1"	106	49	54	Ø 24	687	25 R	40 (20 ×2)

Ambient Temperature: (+5°C ... + 80°C)  
 PN= 10 bar , W. (Non- Shock)

No.	Part Name	Material
01	Body	Brass (Nickel Plated)
02	Body Cap	Brass (Nickel Plated)
03	Ball	Brass (Nickel- Chrome Plated)
04	Stem	Brass
05	Handle	AL. (Painted)
06	Ball Seat	PTFE
07	Couple	Brass (Nickel- Plated)
08	Nut Couple	Brass (Nickel- Plated)
09	Couple Seat	PTFE
10	O __ ring	NBR
11	Hex Flange Screw	Steel (Zinc Plated)

Test Pressure: Shell 25 bar (Hydrostatic)  
 Seat 16 bar (Hydrostatic) 25°C±5





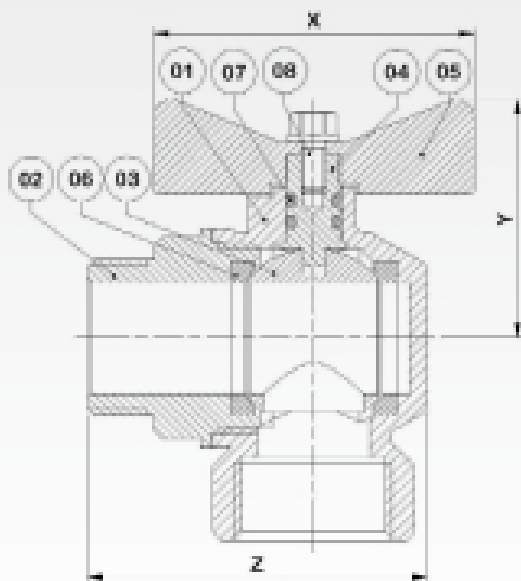
**Model No: 130 A**

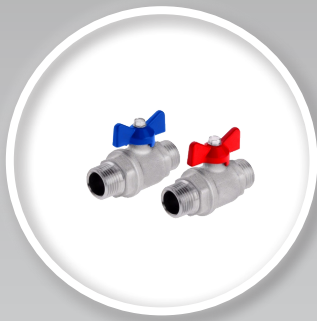
Code No.	Size	Z (mm)	Y (mm)	X (mm)	Bore Size (mm)	Weight (gr)	DN	Q. In Box
No. 130 A	G $\frac{3}{4}$ "	57	40	54	$\emptyset$ 19	348	20 R	60 (30 $\times$ 2)
	G 1"	68	49	54	$\emptyset$ 24	587	25 R	40 (20 $\times$ 2)

Ambient Temperature: (+5°C ... +80°C)  
 PN= 10 bar , W. (Non- Shock)

No.	Part Name	Material
01	Body	Brass (Nickel Plated)
02	Body Cap	Brass (Nickel Plated)
03	Ball	Brass (Nickel- Chrome Plated)
04	Stem	Brass
05	Handle	Al. (Painted)
06	Seat	PTFE
07	O __ ring	NBR
08	Hex Flange Screw	Steel (Zinc Plated)

Test Pressure: Shell 25 bar (Hydrostatic)  
 Seat 16 bar (Hydrostatic) 25°C $\pm$ 5





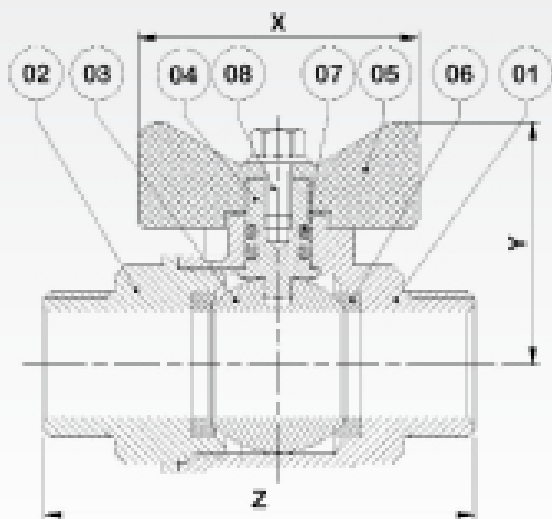
**Model No: 131 A**

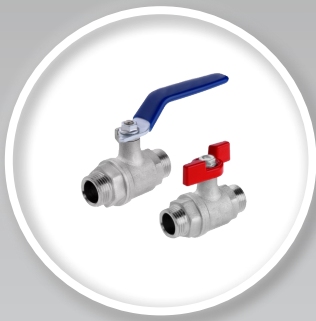
Code No.	Size	Z (mm)	Y (mm)	X (mm)	Bore Size (mm)	Weight (gr)	DN	Q. In Box
No. 131 A	G ½"	61	35	40	Ø 15	178	15	40 (20 ×2)

Ambient Temperature: (+5°C ... +80°C)  
 PN= 10 bar , W. (Non- Shock)

No.	Part Name	Material
01	Body	Brass (Nickel Plated)
02	Body Cap	Brass (Nickel Plated)
03	Ball	Brass (Nickel- Chrome Plated)
04	Stem	Brass
05	Handle	AL. (Painted)
06	Seat	PTFE
07	O __ ring	NBR
08	Hex Flange Screw	Steel (Zinc Plated)

Test Pressure: Shell 25 bar (Hydrostatic)  
 Seat 16 bar (Hydrostatic) 25°C±5

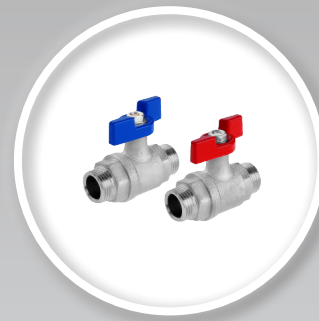




**Model No: 132**



**Model No: 132 A**



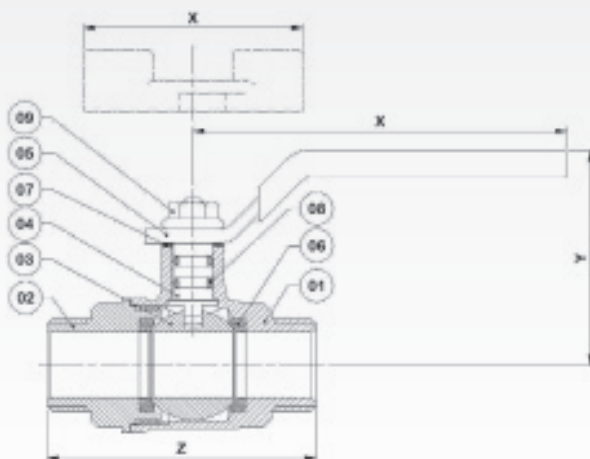
**Model No: 132 B**

Code No.	Size	Z (mm)	Y (mm)	X (mm)	Bore Size (mm)	Weight (gr)	DN	Q. In Box
No. 132 A	G½"	61	49	85	Ø 15	230	15	80 (8 × 10)
No. 132 B	G½"	61	42	50	Ø 15	202	15	80 (8 × 10)

Ambient Temperature: (+5°C ... + 80°C)  
 PN= 10 bar , W. (Non- Shock)

No.	Part Name	Material
01	Body	Brass (Nickel Plated)
02	Body Cap	Brass (Nickel Plated)
03	Ball	Brass (Nickel- Chrome Plated)
04	Stem	Brass
05	Handle	No. 132 A & D: AL. (Painted) No. 125 C: Steel (Zinc Plated)- Cover (PVCE)
06	Seat	PTFE
07	Washer	PE
08	O __ ring	NBR
09	Hex Nut __ DIN 6923	Steel (Zinc Plated)

Test Pressure: Shell 25 bar (Hydrostatic)  
 Seat 16 bar (Hydrostatic) 25°C±5





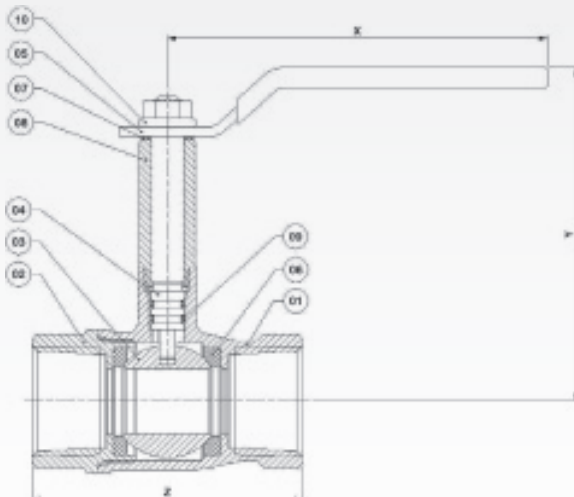
**Model No: 133 A**

Code No.	Size	Z (mm)	Y (mm)	X (mm)	Bore Size (mm)	Weight (gr)	DN	Q. In Box
No. 133 A	NPT 1"	86	102	116	Ø 20	625	25	40 (4 ×10)

Ambient Temperature: (-29°C ... +66°C)  
MOP= 5 bar , O.G (Non- Shock)

No.	Part Name	Material
01	Body	Brass
02	Body Cap	Brass
03	Ball	Brass (Nickel- Chrome Plated)
04	Stem	Brass
05	Handle	No. 133 A:Steel (Zinc Plated)- Cover (PVCE)
06	Seat	PTFE
07	Washer	PE
08	Stem Boush	Brass
09	O __ ring	NBR
10	Hex Nut __ DIN 6923	Steel (Zinc Plated)

Test Pressure: Shell 29 bar (Hydrostatic)  
Seat 7.5 bar (Air) 25°C±5





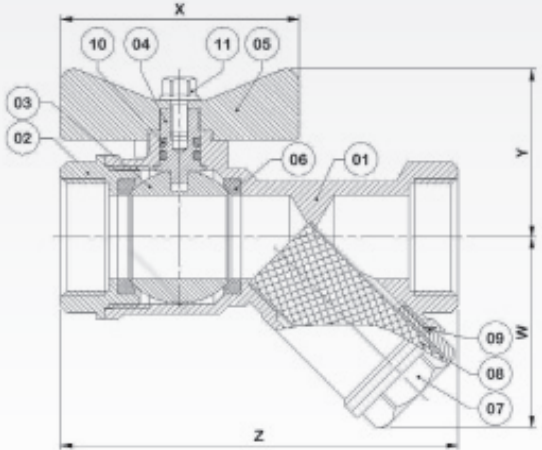
**Model No: 134 A**

Code No.	Size	W (mm)	Z (mm)	Y (mm)	X (mm)	Bore Size (mm)	Weight (gr)	DN	Q. In Box
No. 134 A	G 1/2"	38	75	35	40	Ø 15	248	15	100 (100 ×1)
	G 3/4"	43	90	38	54	Ø 19	358	20 R	50 (50 ×1)

Ambient Temperature: (+5°C ... + 80°C)  
 PN= 10 bar , W. (Non- Shock)

No.	Part Name	Material
01	Body	Brass (Nickel Plated)
02	Body Cap	Brass (Nickel Plated)
03	Ball	Brass (Nickel- Chrome Plated)
04	Stem	Brass
05	Handle	AL. (Painted)
06	Seat	PTFE
07	Filter Cap	Brass (Nickel Plated)
08	Filter	Stainless Steel
09	O __ ring	EPDM
10	O __ ring	NBR
11	Hex Flange Screw	Steel (Zinc Plated)

Test Pressure: Shell 25 bar (Hydrostatic)  
 Seat 16 bar (Hydrostatic) 25°C±5





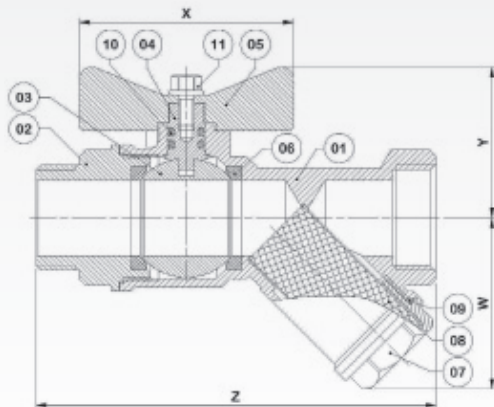
**Model No: 135 A**

Code No.	Size	W (mm)	Z (mm)	Y (mm)	X (mm)	Bore Size (mm)	Weight (gr)	DN	Q. In Box
No. 135 A	G 1/2"	38	86	35	40	Ø 15	265	15	100 (100 ×1)
	G 3/4"	43	101	38	54	Ø 19	393	20 R	50 (50 ×1)

Ambient Temperature: (+5°C ... +80°C)  
 PN= 10 bar , W. (Non- Shock)

No.	Part Name	Material
01	Body	Brass (Nickel Plated)
02	Body Cap	Brass (Nickel Plated)
03	Ball	Brass (Nickel- Chrome Plated)
04	Stem	Brass
05	Handle	AL. (Painted)
06	Seat	PTFE
07	Filter Cap	Brass (Nickel Plated)
08	Filter	Stainless Steel
09	O __ ring	EPDM
10	O __ ring	NBR
11	Hex Flange Screw	Steel (Zinc Plated)

Test Pressure: Shell 25 bar (Hydrostatic)  
 Seat 16 bar (Hydrostatic) 25°C±5







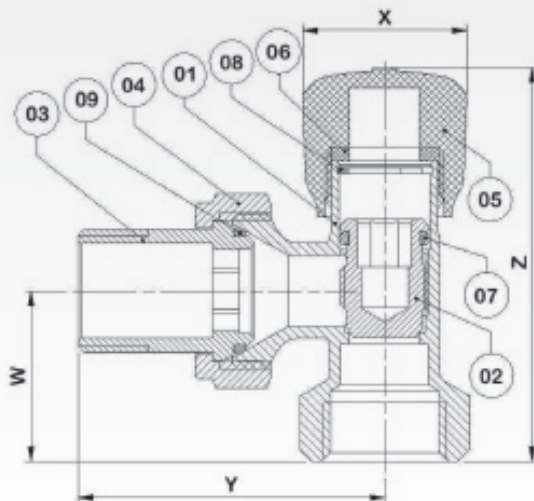
**Model No: 138 B**

Code No.	Size	W (mm)	Z (mm)	Y (mm)	X (mm)	Weight (gr)	DN	Q. In Box
No. 138 B	G 1/2"	21	66	52	28	180	15	60 (6 ×10)

Ambient Temperature: (+5°C ... +80°C)  
 PN= 10 bar , W. (Non- Shock)

No.	Part Name	Material
01	Body	Brass (Nickel Plated)
02	Valvate	Brass (Nickel Plated)
03	Couple	Brass (Nickel Plated)
04	Nut Couple	Brass (Nickel Plated)
05	Handle	ABS
06	Seal	NBR
07	O __ ring	EPDM
08	CirClips	Steel
09	O __ ring	EPDM

Test Pressure: Shell 15 bar (Hydrostatic)  
 Seat 4 bar (Air) 25°C±5





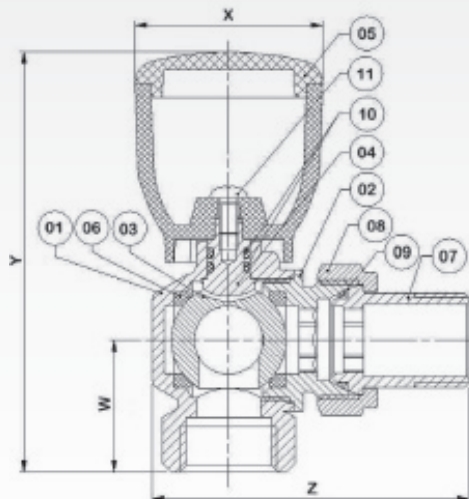
**Model No: 139 B**

Code No.	Size	W (mm)	Z (mm)	Y (mm)	X (mm)	Bore Size (mm)	Weight (gr)	DN	Q. In Box
No. 139 B	G ½"	29	69	92	41	Ø 15	260	15	60 (6 ×10)

Ambient Temperature: (+5°C ... +80°C)  
 PN= 10 bar , W. (Non- Shock)

No.	Part Name	Material
01	Body	Brass (Nickel Plated)
02	Body Cap	Brass (Nickel Plated)
03	Ball	Brass (Nickel- Chrome Plated)
04	Stem	Brass
05	Handle	ABS
06	Ball Seat	PTFE
07	Couple	Brass (Nickel Plated)
08	Nut Couple	Brass (Nickel Plated)
09	O __ ring	EPDM
10	Screw __ AS 1427H	Steel (Zinc Plated)
11	O __ ring	NBR

Test Pressure: Shell 25 bar (Hydrostatic)  
 Seat 16 bar (Hydrostatic) 25°C±5





**Model No: 141 A**



**Model No: 141 A**



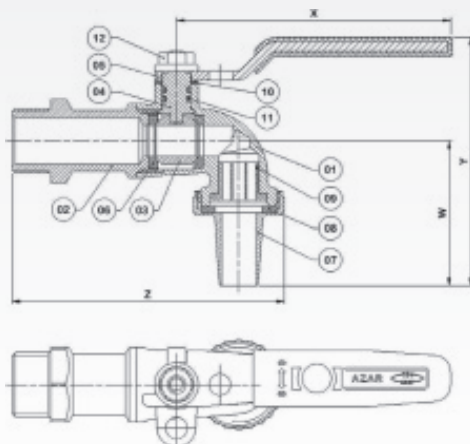
**Model No: 141 A**

Code No.	Size	W (mm)	Z (mm)	Y (mm)	X (mm)	Bore Size (mm)	Weight (gr)	DN	Q. In Box
No. 141 A	G 1/2"	47	88	80	88	Ø 10	225	15 R	90 (9 ×10)

Ambient Temperature: (+5°C ... +80°C)  
 PN= 10 bar, W. (Non- Shock)

No.	Part Name	Material
01	Body	Brass (Nickel Plated)
02	Body Cap	Brass (Nickel Plated)
03	Ball	Brass (Nickel- Chrome Plated)
04	Stem	Brass
05	Handle	Steel (Zinc Plated)- Cover (PVCE)
06	Seat	PTFE
07	Hose Holder	Brass
08	Washer	NBR
09	Spray	PE
10	Washer	PE
11	O __ ring	NBR
12	Hex Nut __ DIN 6923	Steel (Zinc Plated)

Test Pressure: Shell 25 bar (Hydrostatic)  
 Seat 16 bar (Hydrostatic) 25°C±5





+98 (21) 22237692-22234928



fax:+98 (21) 22670835

Unit#9, No.6, Jalilzadeh St.,

West Sadr Highway, Tehran - Iran



[www.fardasun.com](http://www.fardasun.com)



[info@fardasun.com](mailto:info@fardasun.com)